

Batten clamps are designed to be used to create a secure suspension point from a rigging system batten.

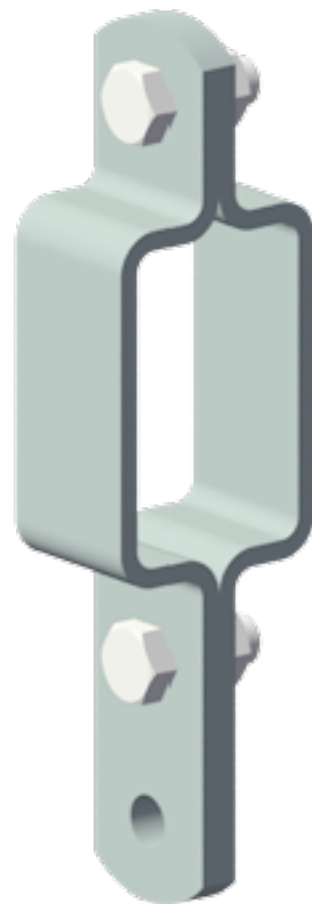
Designed specifically to fit 75 x 50mm RHS steel section.

Working Load Limit of 500Kg with a minimum safety factor of 6:1.

Manufactured in two halves, bolting together over the batten with two M12 x 25mm bolts secured with M12 nyloc nuts.

The load suspension hole is 13mm in diameter to comfortably accommodate a wide range of shackles and other secure connectors.

Made in New Zealand.



Accessories



SH750B: Safety Bow Shackle, Black, WLL: 750Kg



SH500YP: Box Shackle, Galvanised Bow with Yellow Pin, WLL: 500Kg

Specifications

Part Number.....	BC-7550
Working Load Limit (WLL)....	500Kg
Finish.....	Bright Zinc Plated / Black Power Coated
Dimensions.....	218 x 40 x 62 mm
Weight.....	0.8Kg